


The background of the slide is a light gray gradient. It is decorated with numerous realistic water droplets of various sizes. Some droplets are clustered in the top left corner, while others are scattered across the bottom right. Each droplet has a soft highlight and a subtle shadow, giving them a three-dimensional appearance.

# DECON 2.0 UPDATE

HEALTH AND SAFETY DIVISION



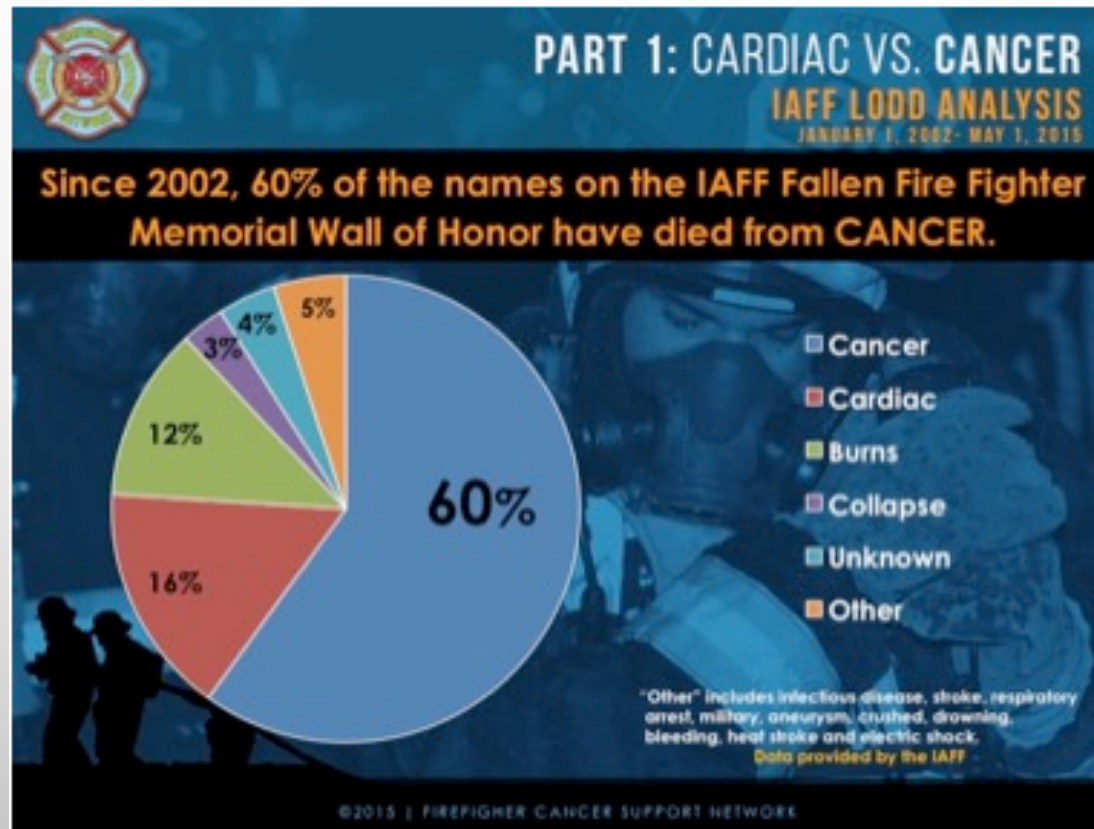
# OBJECTIVES

- WHY ARE WE DOING THIS
  - REVIEW PPE INSPECTION PROGRAM
  - NEW PROCESS
  - NEW RESOURCES
- 

# WHY?

- [HTTPS://WWW.YOUTUBE.COM/WATCH?V=HOVBYPsAHOG](https://www.youtube.com/watch?v=HOVBYPsAHOG)


# KENT, OLYMPIA, BREMERTON, CP







# BUNKER INSPECTION

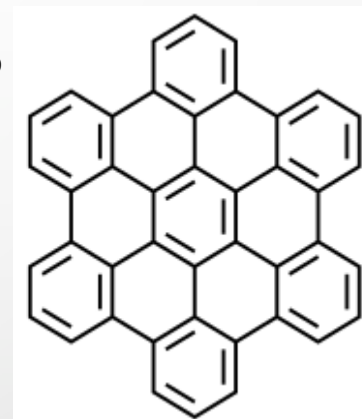
- WHY
    - WAC REQUIRED 296-305-02002
    - PPE IS IMPORTANT
  - WHO
    - EVERYONE
  - WHEN
    - TWICE A YEAR
      - ADVANCED AND ROUTINE
  - HOW
    - ROUTINE
    - ADVANCED
    - DOCUMENT IT
- 

# WHAT DO WE DO!

- FIRE SCENE:
  - STAGE 1
  - STAGE 2
    - BRUSH/SOAP/WIPES/BAG
    - DRY CLOTHES
- STATION:
  - SHOWER/2<sup>ND</sup> SET/CACHE
  - PERSONNEL WILL SHOWER AND CHANGE CLOTHING AT THE CONCLUSION OF THE INCIDENT. ALL CONTAMINATED CLOTHING WILL BE WASHED AT STATION WASHERS, NOT AT HOME. CREWS SHOULD REMAIN “OUT OF SERVICE” TO COMPLETE THIS TASK, EXCEPT FOR ANY ALARM WHERE A PROMPT RESPONSE REDUCES THE SEVERITY OF THE INCIDENT OR THE ASSIGNED RESOURCE INDICATES A SIGNIFICANT DELAY IN RESPONSE. OFFICERS SHALL MONITOR A RADIO TO ENSURE THIS HAPPENS.
  - ROUTINE FOR HELMET, GLOVES, MASK, BOOTS
  - CLEAN EQUIPMENT
    - SCBA/HOSE/CAB/TOOLS/RADIO
  - ADVANCED CLEAN OF BUNKERS AND HOOD

# BENEFITS

- REMOVES BAD STUFF BETTER
  - IFSI/UNC: REDUCES POLYCYCLIC AROMATIC HYDROCARBONS BY 85%
    - PAH'S: SKIN, LUNG, BLADDER, LIVER, STOMACH CANCERS
    - PAH'S: CARDIOVASCULAR DISEASE
- REDUCES EXPOSURE TO SKIN AND LUNGS
- DRY DECON-MINIMALLY EFFECTIVE





# WHAT DO WE USE

- DOCUMENTS
  - POLICY 105, CARE AND MAINTENANCE MANUAL, 431 GUIDE
- EQUIPMENT
  - DECON KITS
    - ENGINE VS LADDER 68

# PRACTICE

- FIELD DECON
- STATION DECON